

# Installation Guide

## for *Kodak* i30 and i40 Scanners

### Package Contents

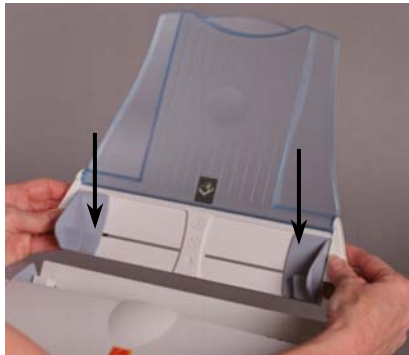
- Kodak i30 or i40 Scanner
- Input tray
- Output tray
- Feed module
- USB 2.0 cable
- USB 2.0 board
- Power supply
- Power cord bundle
- Installation and application CDs
- Registration card
- Printed User's Guide, English

**NOTE:** Additional instructions for the steps below can be found in the User's Guide and other supporting documentation.

# 1

### Attaching the input tray

1. Align the input tray pins with the slots.
2. Push down on the input tray until it snaps into place.



# 2

### Attaching the output tray

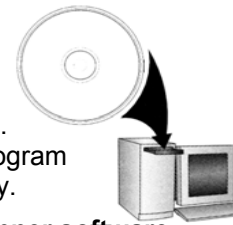
1. Insert the pin on the left side of the output tray in the hole.
2. Press the ribbed button on the right side of the output tray and insert the pin in the hole on the right side of the scanner.



# 3

### Install software

1. Insert the *Kodak* i30/i40 Scanner Installation CD in the CD-ROM drive. The installation program starts automatically.
2. Select **Install Scanner software**.
3. Follow the on-screen instructions to install the TWAIN and ISIS drivers and the *Kodak* Scan Validation Tool.

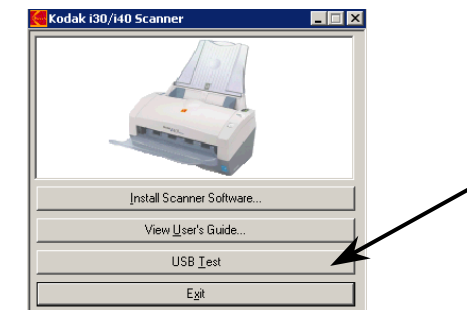


# 4

### Check your USB port

The USB Test option will check for a valid USB port.

1. Select **USB Test**.
2. If you have a valid USB 2.0, skip step 5, if not, do step 5.



# 5

### Install USB card

**IMPORTANT:** Turn the computer off and unplug the power cord. Avoid static discharge.



- Follow the instructions provided on the Adaptec Installation CD.

# 6

### Install USB cord

1. Connect the USB cable to the scanner USB port.
2. Connect the USB cable to the USB port on your PC.



# 7

### Install power cords

1. Select the appropriate AC power cord packed with your scanner.
2. Plug the DC power connector to the scanner.
3. Plug the AC power cord into the power adaptor.
4. Plug the power adaptor plug into the wall.



# 8

### Turn on power

- Press the power switch on the back of the scanner to turn the scanner on.

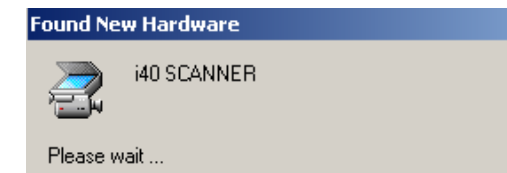


**NOTE:** The scanner will go through a series of self tests, the green LED indicator will flash. When it is finished and ready to scan, the indicator will stop flashing and stay lit.

# 9

### Scanner will be recognized by the software

Your operating software will now auto detect the scanner.



**NOTE:** Depending on the computer operating system you are using, these screens may be different. Use your software of choice to use the scanner.

[www.kodak.com/go/docimaging](http://www.kodak.com/go/docimaging)

EASTMAN KODAK COMPANY  
343 State Street  
Rochester, NY 14650 U.S.A  
A-61525 September 2004  
©Eastman Kodak Company 2004  
TM: Kodak Printed in U.S.A.

